

Figure 1 ROMS bathymetry using Seagrid

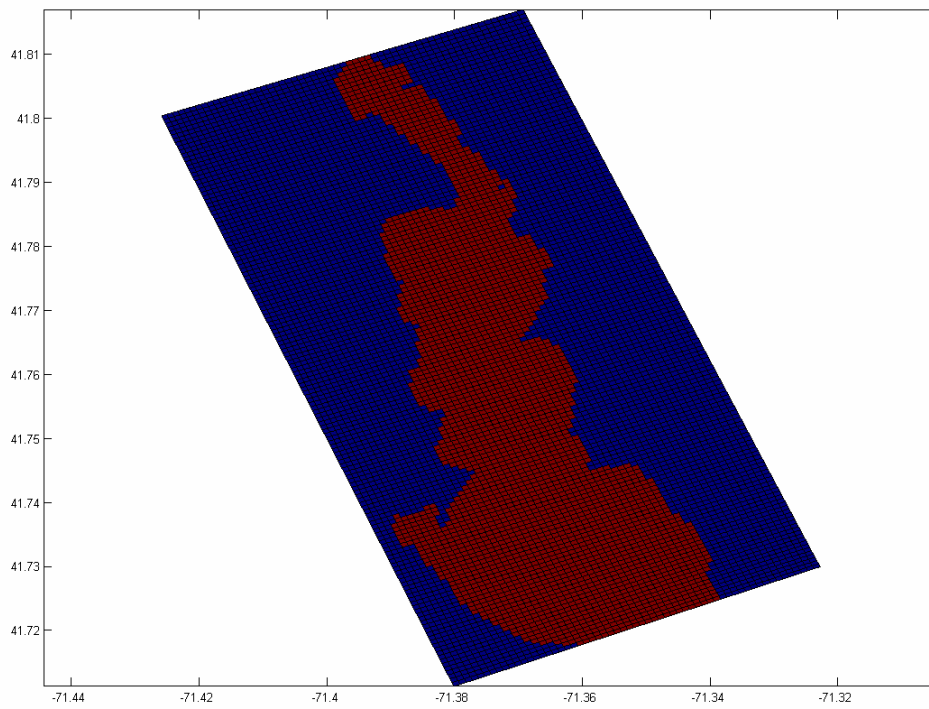


Figure 2 ROMS flags obtained by plotting `pcolor(lon_rho,lat_rho,mask_rho)`

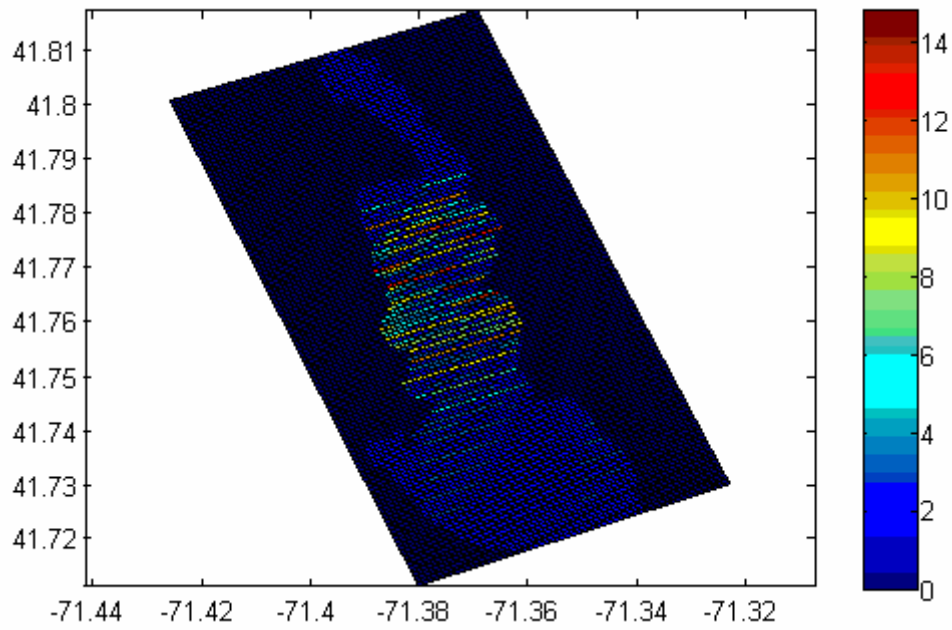


Figure 3 ROMS flags obtained by plotting `pcolor(lon_rho,lat_rho,h.*mask_rho)`.  
Even land cells have depths

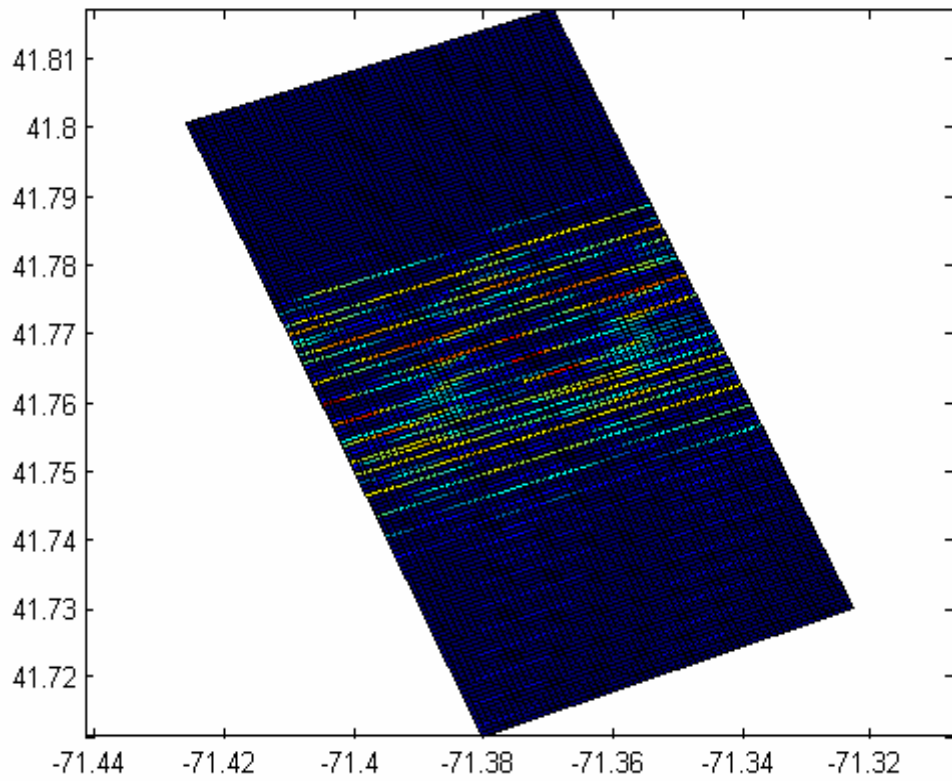


Figure 4 ROMS flags obtained by plotting `pcolor(lon_rho,lat_rho,,h)`

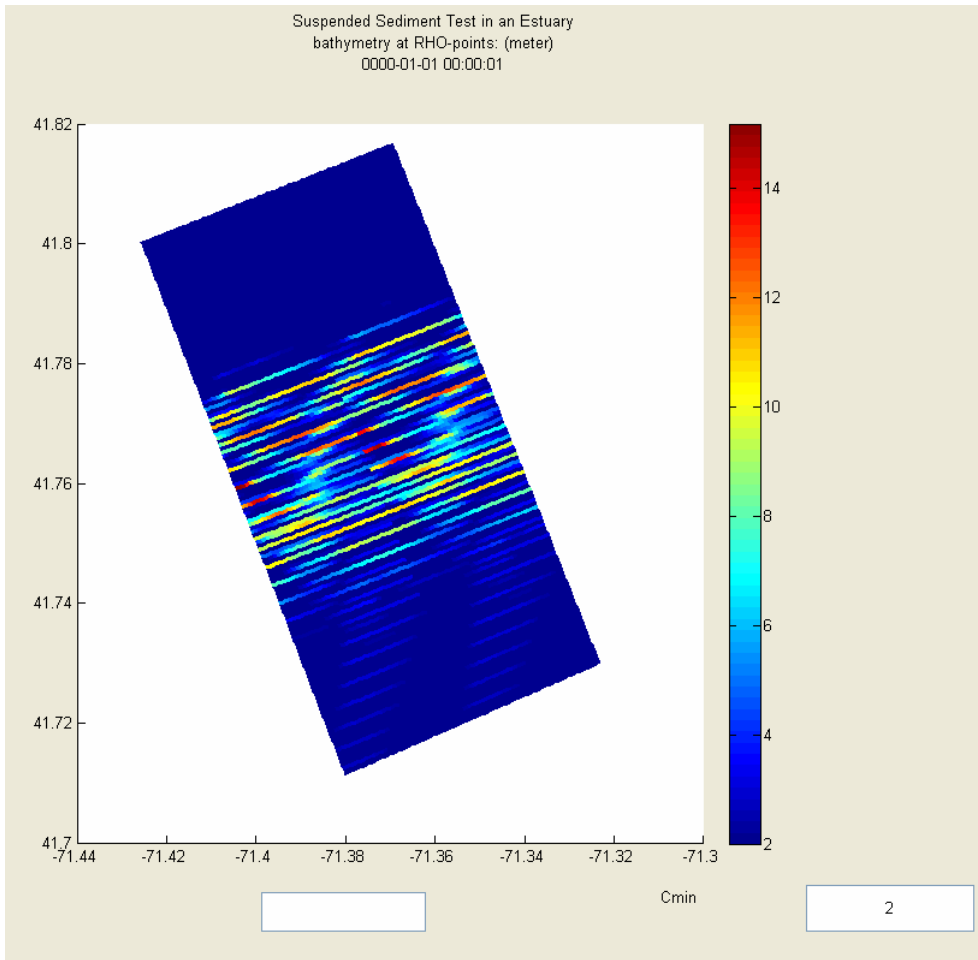


Figure 5 Model output of bathymetry from rslice.